

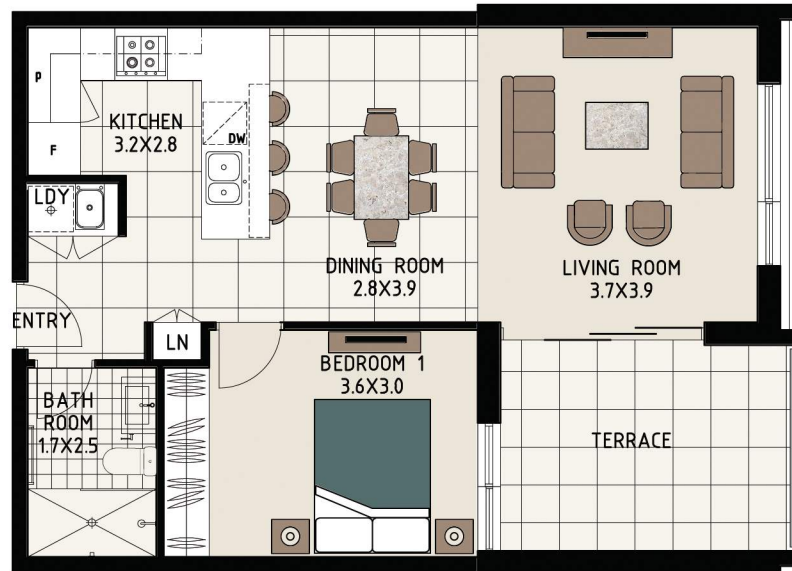


WILLOW
ST IVES

UNIT 1105 & 1106 - LEVEL 3

1 BEDROOM APARTMENT + TERRACE

| | |
|------------------|----------|
| INTERNAL AREA | 56.0 SQM |
| EXTERNAL AREA | 10.6 SQM |
| CAR SPACE | 1 |
| BASEMENT STORAGE | 6 CM |



KEY

